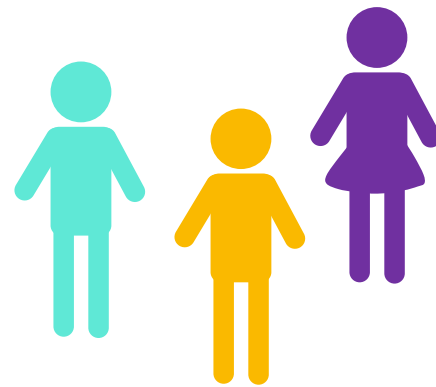
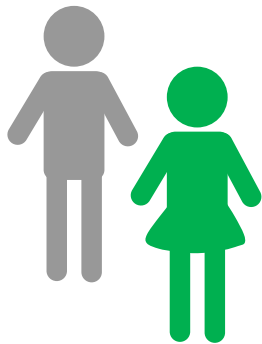
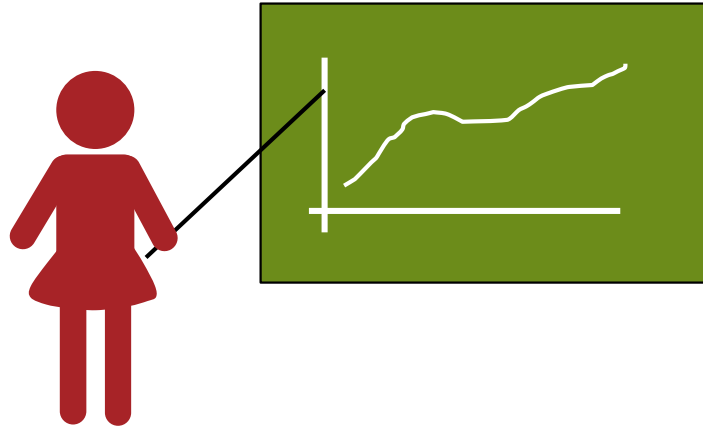


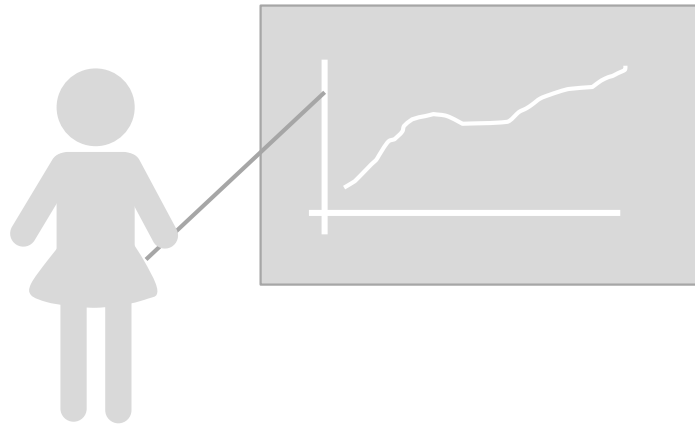
Wie können Forscher:innen Wissen(schaft) gut kommunizieren?



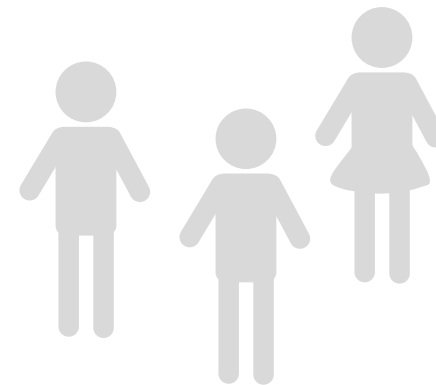
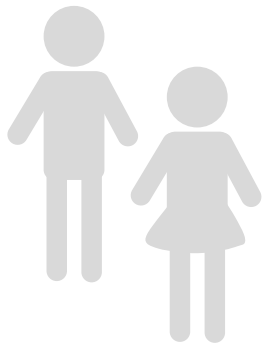
Dr. Elisabeth Mertl

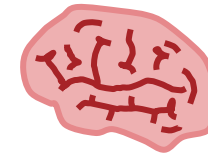
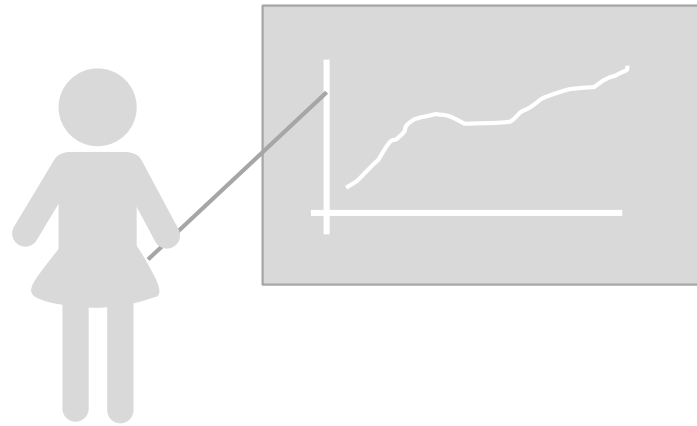
Forum Alpbach,
26.08.2022





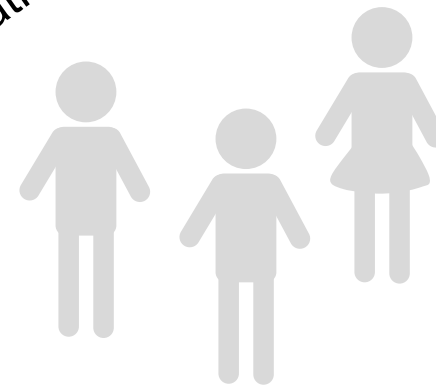
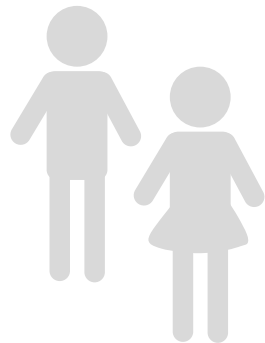
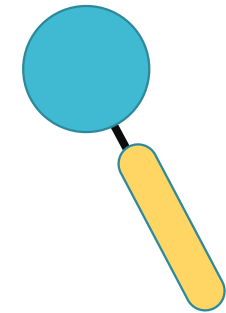
~~Was?~~
Warum?

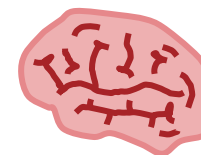
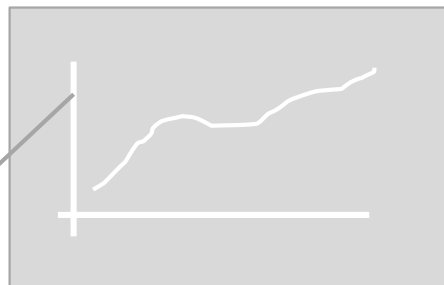
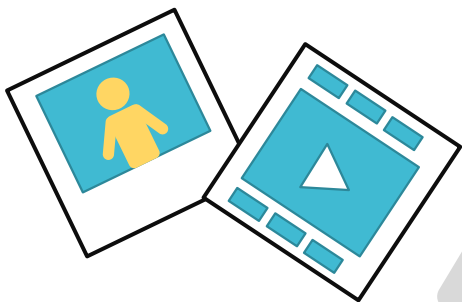




~~Was?~~
Warum?

Parastratiosphecomyia
stratiosphecomyioides

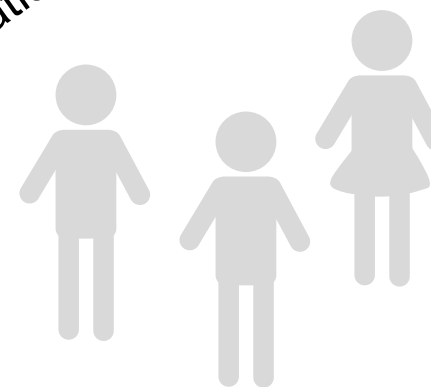
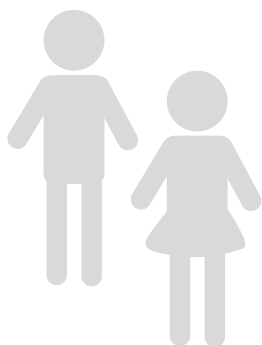
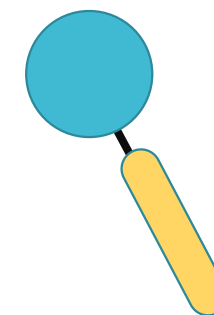


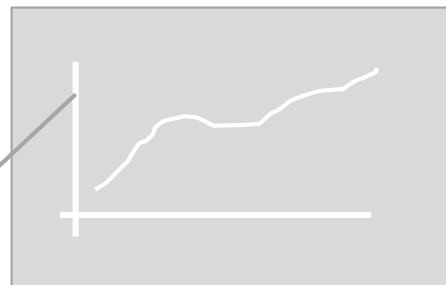
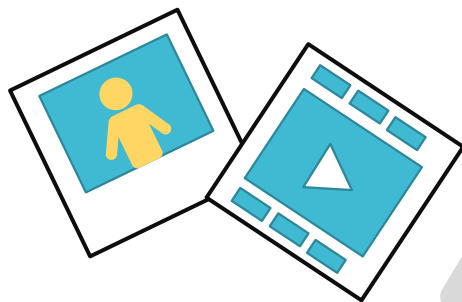


Parastratiophemyia
stratiophemyioides

~~Was?~~

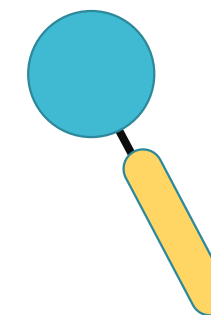
Warum?



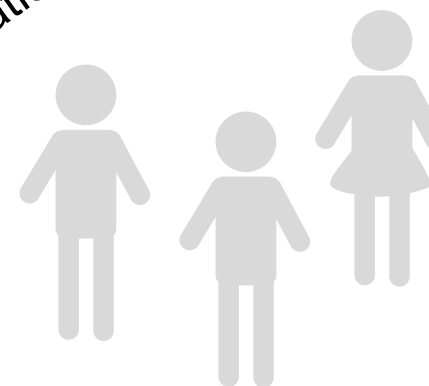
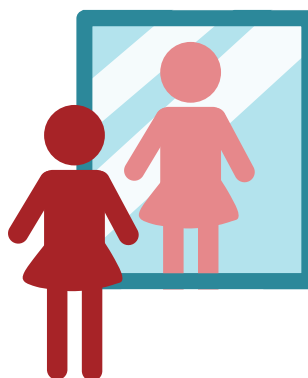
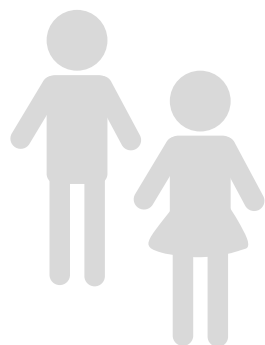


~~Was?~~

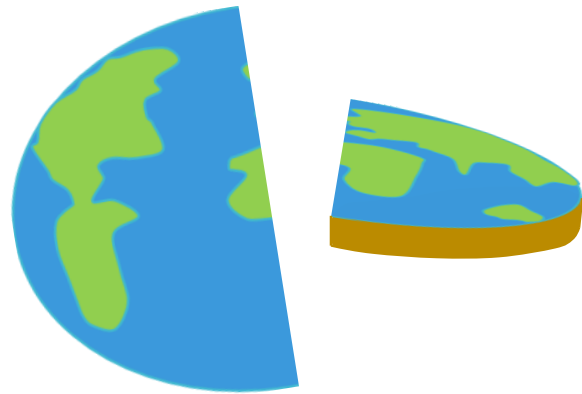
Warum?

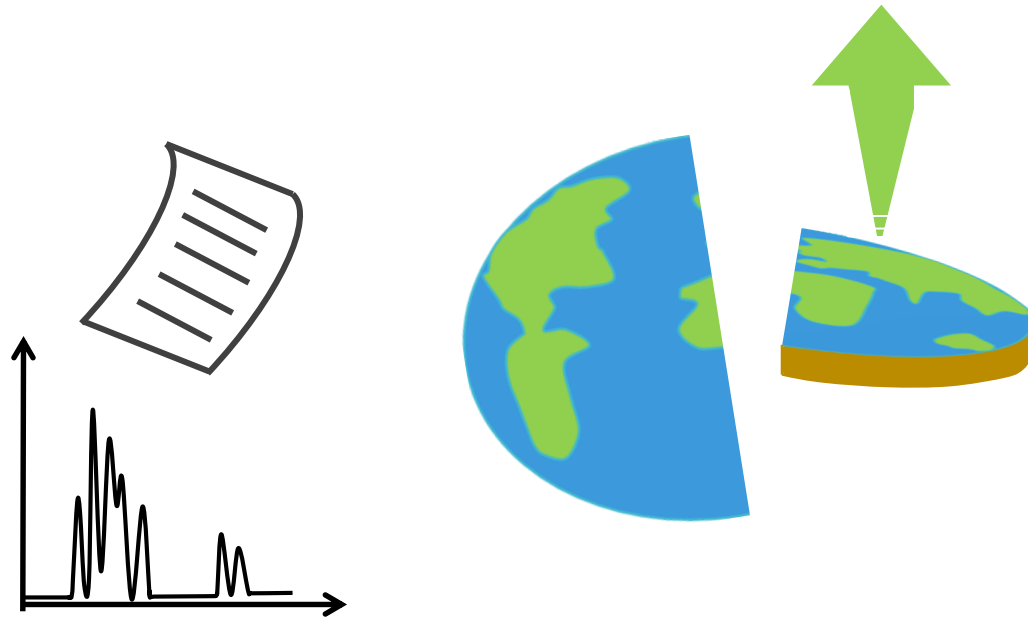


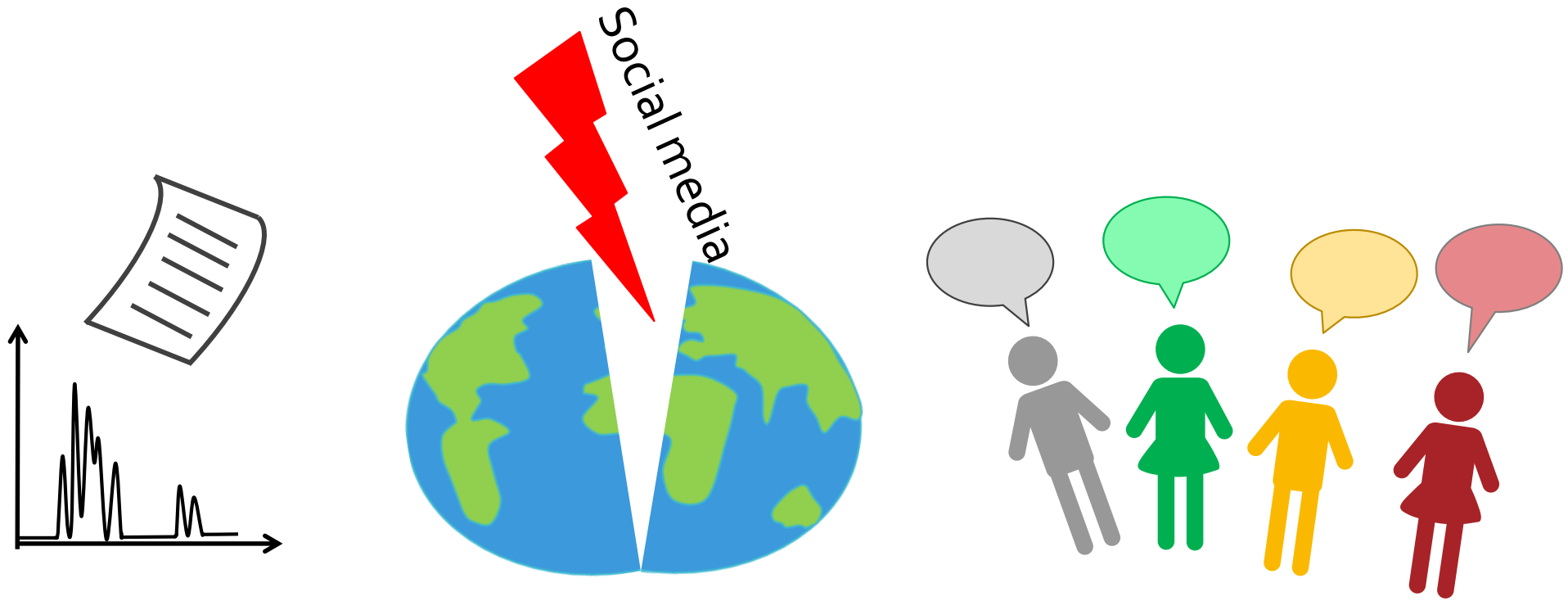
Parastratiosphecomyia
stratiosphecomyioides

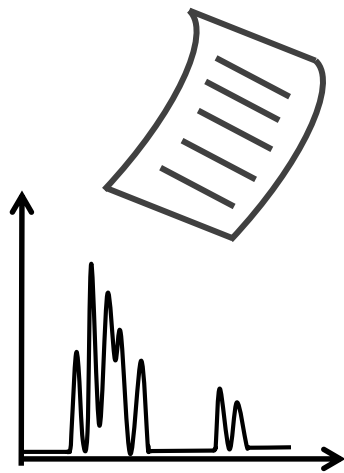


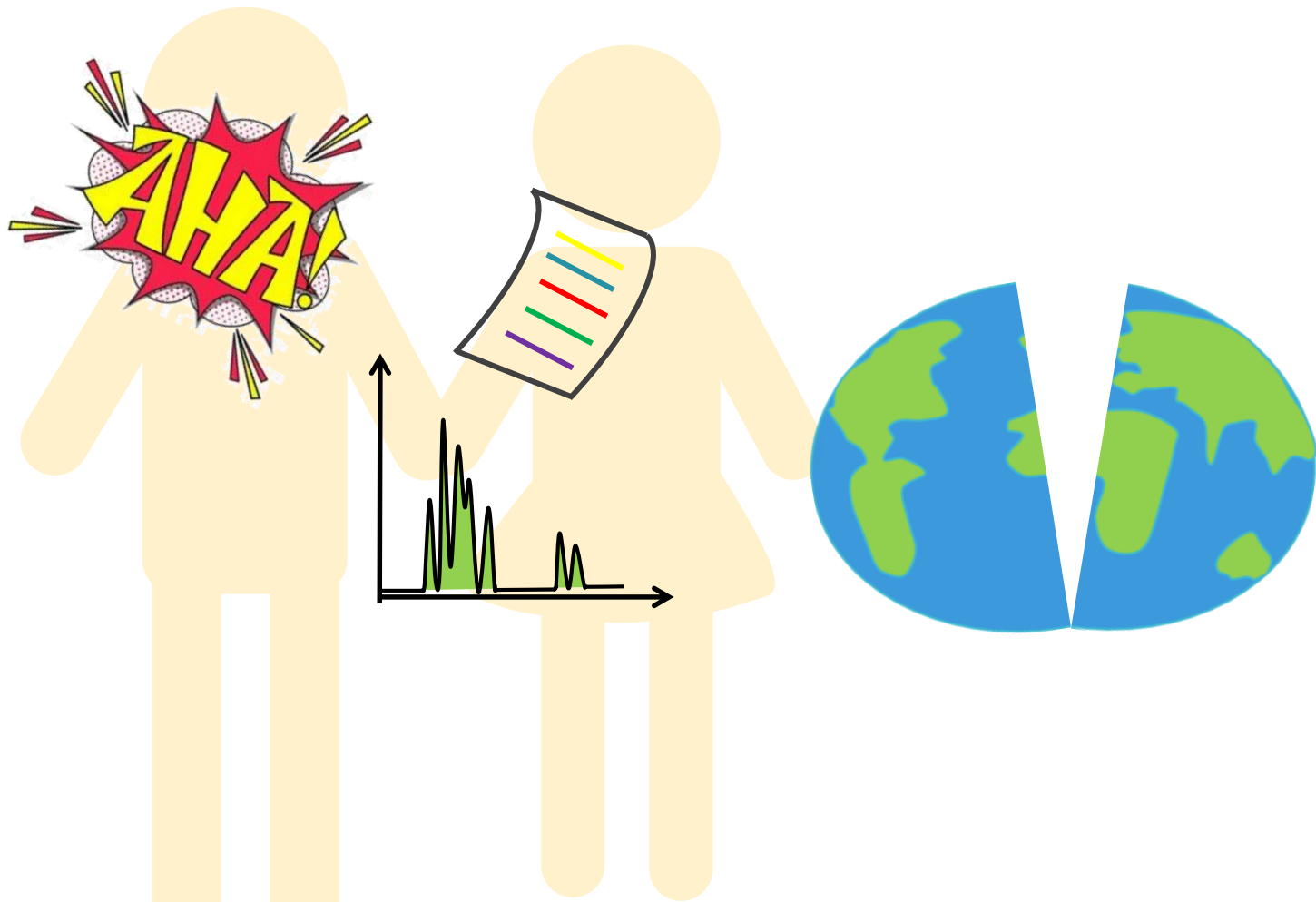


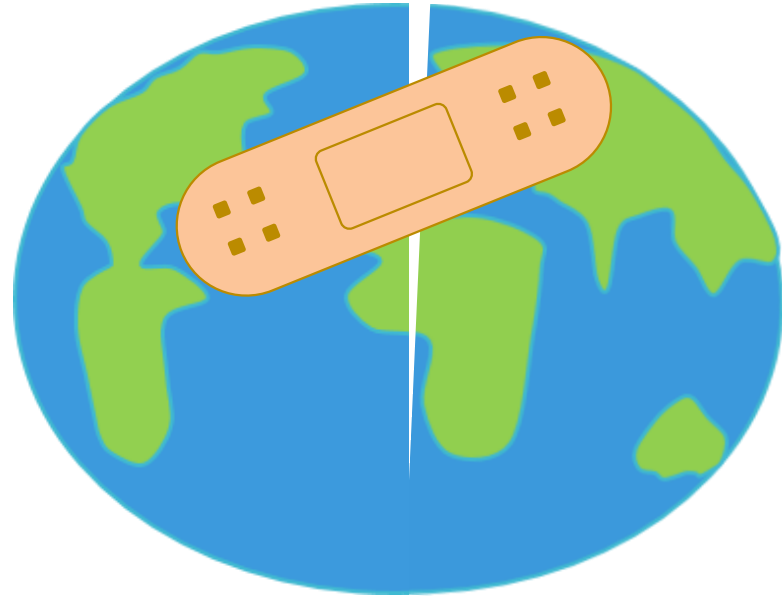












Elisabeth Mertl

OFI

1030 Wien, Franz-Grill-Straße 5, Objekt 213

elisabeth.mertl@ofi.at | www.ofi.at